

Thank you for purchasing our equipment. Please read this manual carefully and heed the safety warnings and instructions before installing, using or repairing the equipment. This will ensure not only the protection of persons, but also the long life of the equipment.

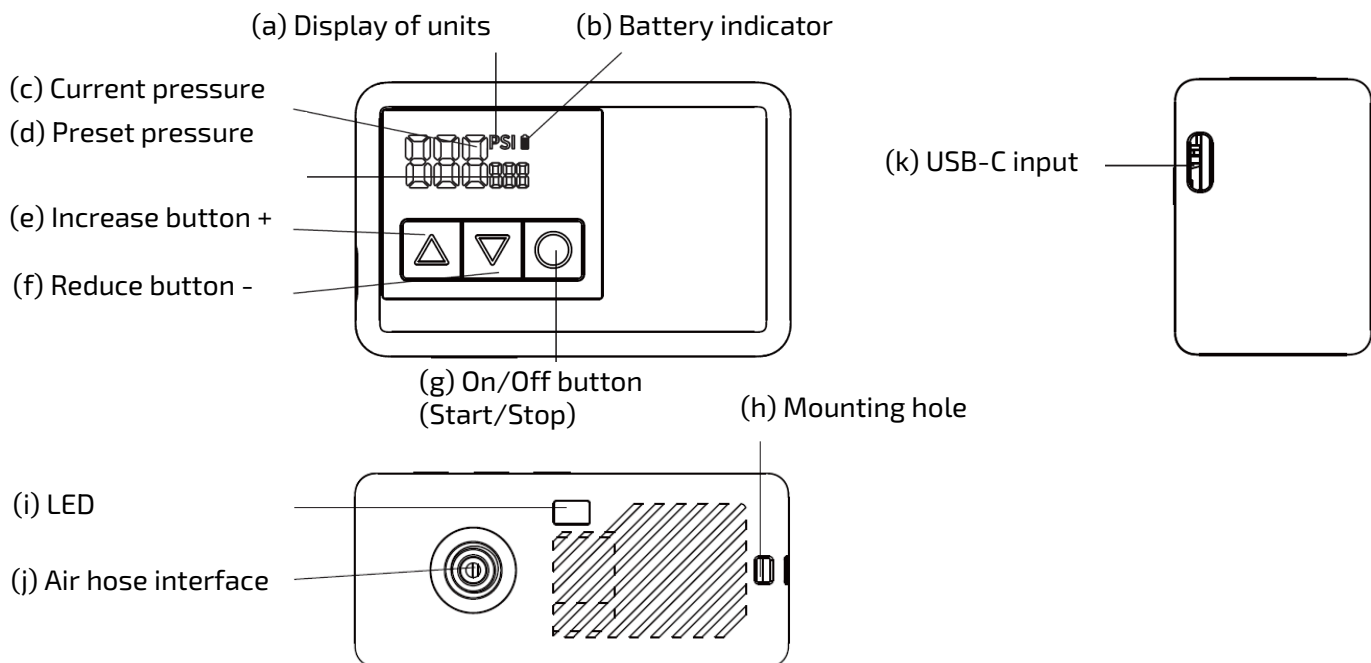
TECHNICAL PARAMETERS

Power	5V = 1.5A
Batteries	500mAh Li-ion battery (7.4V / 3.7Wh)
Battery charging time	about 1 hour
Pressure	120 psi
Air flow	14 L/min

PACKAGING CONTENTS

1x Electric Compressor, 1x Valve (Schrader), 1x USB-C Cable, 1x Valve Air Hose, 1x Storage Bag, 1x Needle, 1x Valve (Presta), 1x User Manual, 1x Lanyard

PRODUCT DESCRIPTION



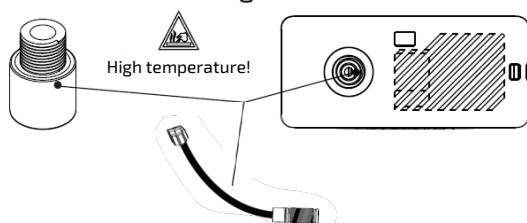
SAFETY NOTICE

- Do not walk away from the device during inflation.
- Do not place the device near flammable or explosive objects.
- Do not expose the device to moisture, water and protect it from falling.
- Store the device at room temperature.
- The device has a built-in lithium battery, dispose of the device at the end of its service life in a designated place.
- The device is not a toy, not suitable for use by children.

HIGH TEMPERATURE WARNING FOR THE DEVICE

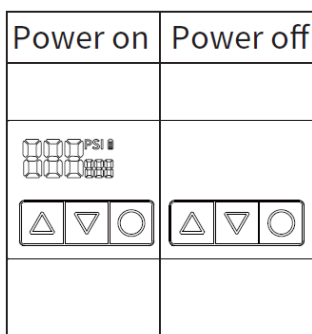
Use extra caution when unscrewing the valve as the parts of the device shown in the figure below become hot during use. Do not touch the air hose!

We recommend taking a 10-minute break before using the device again.



DEVICE CONTROL

1. Switching the device on and off



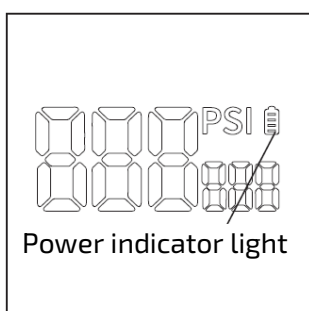
Switch on:

Press and hold the On/Off button for approx. 3 seconds.

Switching off:

Press and hold the On/Off button for approx. 3 seconds.

2. Battery indicator



Different number of lines on the power indicator shows different power output:

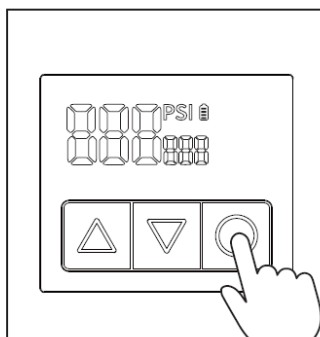
Three lines: 70% - 100%

Two lines: 30% - 70%

One line: 5% - 30%

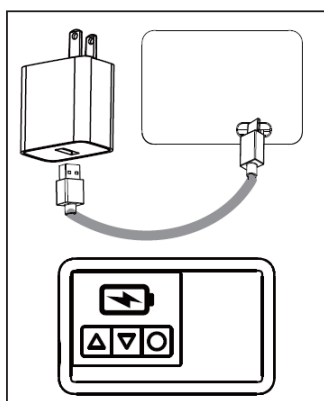
If the battery is below 5%, the device will automatically switch off. Charge the device.

3. Start/stop button



When switched On, press the Start/Stop button to start inflation and when the set pressure is reached, inflation automatically stops

4. Charging



Connect the charging cable to the compressor and the power adapter (not included) to charge the compressor.


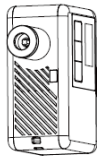
Indicator:

In charging status: indicator bar flashes

Fully charged: charging The indicator bar is permanently green

5. Air nozzle connection

Schrader valve

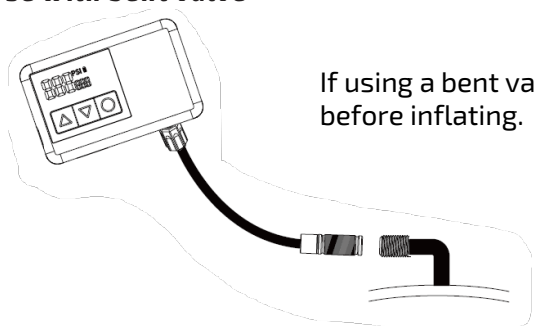
Valve type	Connector
	

This device is supplied with a **Schrader** valve.

Inflating:

Connect the air valve to the Schrader valve of the product to be inflated.

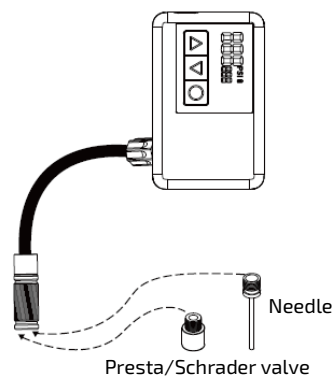
Use with bent valve




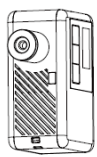
If using a bent valve, use an extension tube to connect before inflating.

Connect the extension tube to the compressor and then connect the required valve to the hose.

Now you can inflate.



Presta valve


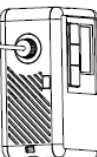
Valve type	Connector
	

This device is supplied with a **Presta** valve.

Inflating:

1. Connect the Presta valve to the fan.
2. Unscrew the cap of the French valve of the tyre.
3. Press the French valve adapter on the tire and connect it Inflatable.

Needle

Valve type	Connector
	

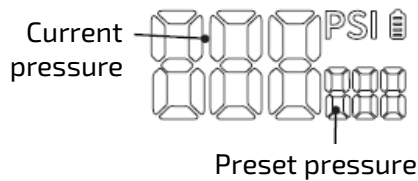
This device comes with a **needle** and can be used for inflating balls.

Inflating:

Connect the needle to the fan
Insert the needle into the ball and inflate it.

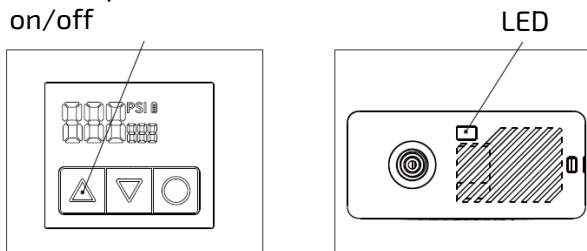
6. Pressure control

When the device is switched on and is connected to the object it is inflating, the measured pressure value is displayed in the upper part of the display.



7. LED

Double press to turn the LED on/off



8. Resetting the pressure

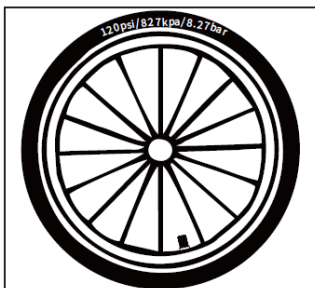
Switch on the device. If no object is connected and the pressure reading is not 0 PSI, press and hold the ▲ ▼ buttons for approximately 3 seconds. The display screen will light up fully, and return to normal mode.

Note: Due to the altitude difference, when the measured pressure value is not 0, manual resetting may improve the accuracy of the pressure. Calibration is not recommended at high temperature.

9. Inflation pressure

To ensure safety, please read the instructions for use and check the required air pressure before inflating objects to avoid injury caused by explosion during over-inflation.

Bicycle tyre



The range of air pressure that the tyres can withstand is marked on the side of the tyres. Please refer to the owner's manual of the respective vehicle for more detailed pressure advice.

Balls



The inflation pressure of soccer, basketball, volleyball and other balls is marked around the inflation hole. Please refer to the instructions for the respective balls for more detailed advice on pressure.

AN OVERVIEW OF THE USUAL PRESSURE OF COMMON PRODUCTS

Product Categories	Product type	Pressure range
Bicycle	Baby carriages/carts	18 ~ 30 PSI
	Tyre (25-41cm)	30 ~ 45 PSI
	Tyre (51-77cm)	38 ~ 55 PSI
	Road bike	100 ~ 120 PSI
Ball	Children's ball (toy)	3 ~ 6 PSI
	Basketball	7 ~ 9 PSI
	Ball for football	10 ~ 12 PSI
	Ball for volleyball	4 ~ 6 PSI
	Rugby ball	10 ~ 14 PSI

Please note: This is an approximate pressure range, always check the pressure directly on the product you are about to use!

ELIMINATION OF POSSIBLE FAULTS

Glitch	Solution
Slow inflation	<ol style="list-style-type: none"> 1. Make sure you are using a suitable charging adapter. 2. Check the valve seals. 3. Check that the connecting parts at both ends of the air valve are tightened. 4. Check inflated items for leaks.
The device is switched on but cannot be inflated	<ol style="list-style-type: none"> 1. Make sure you are using a suitable charging adapter. 2. Check that you are using the correct pressure.
The set pressure cannot be increased or decreased.	<ol style="list-style-type: none"> 1. Press the ▲ ▼ buttons for about 3 seconds, the pressure will reset.
The inflation works, but the pressure is 0	<ol style="list-style-type: none"> 1. Low pressure products such as inflatable balloons are not intended for this equipment. 2. If the tyre is damaged, the pressure may not show up until the tyre has been inflated for some time.
The device switches itself off	<ol style="list-style-type: none"> 1. The device automatically switches itself off within 3 minutes of non-use. Switch the device on again.
Battery status differs in standby and inflation mode	<ol style="list-style-type: none"> 1. When discharging a lithium battery, there is an apparent voltage drop, resulting in a mismatch between the charge and standby light. This phenomenon is not a fault.
Power indicator does not appear after charging	<ol style="list-style-type: none"> 1. Replace the power cord and adapter.
Screen response speed is slow	<ol style="list-style-type: none"> 1. After switching on the device, wait at least 3 seconds for the device to fully start.

This PAP02 product is CE declared in accordance with the applicable regulations.
On request from the manufacturer: info@solight.cz, or downloadable from www.solight.cz/en.



SOLIGHT

Solight Holding, s.r.o., Na Brně 1972, Hradec Králové 500 06, Czech Republic.