

Dear customer, thank you for purchasing our product. Please read the following instructions carefully and follow them to serve you safely and to your full satisfaction. This will prevent misuse or damage. Avoid unprofessional handling of this appliance and always observe the electrical appliance usage guidelines. Keep the instruction manual carefully. For use in the home or indoors. This product should only be used by an adult. Installation may only be carried out by a qualified worker qualified in accordance with Decree No. 50/1978 Coll. as amended, at least a worker knowledgeable in accordance with Section 5 of Decree No. 50/1978 Coll. as amended.

### TECHNICAL PARAMETERS

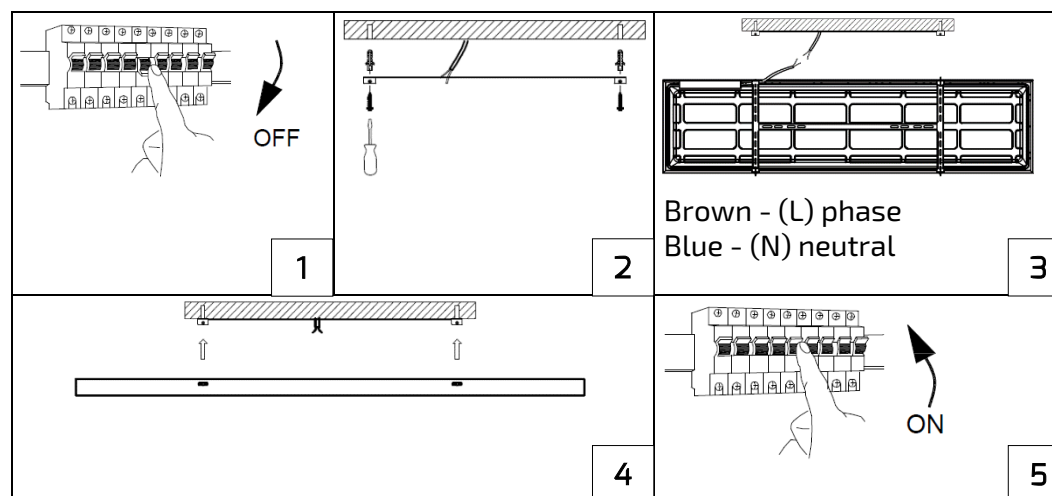
Consumption	40W
Luminous flux	4800lm
Coverage	IP40
Dimensions	595x595x38mm
Colour rendering index	Ra: >80
Voltage	220 - 240V
Power supply	Philips 220-240V

### SAFETY NOTICE

- Installation must only be carried out by a qualified electrician.
- Power supply: 220-240V AC 50/60 Hz.
- Use only indoors.
- If the supply cable of this luminaire is damaged, it must be replaced by the manufacturer's service department.
- There are no replaceable parts in the device.

### INSTALLATION

1. Switch off the power supply before installation.
2. Insert the dowels into the pre-drilled holes and screw the frame.
3. Connect the power cord to the power supply of the luminaire and make sure the wiring is correct.
4. Screw the luminaire to the bracket.
5. Switch on the power supply.



The light source of this luminaire is non-replaceable, at the end of its service life the entire luminaire must be replaced and disposed of in a designated place. This product contains a light source that for design reasons cannot be removed for verification and therefore the entire product is considered a light source.

